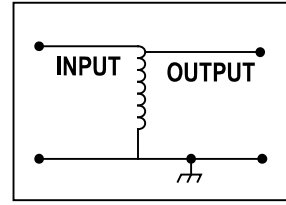


REMOTE ALARM CONTACTS*
2A @ 250 VAC



ADJUSTABLE
TARGET OUTPUT
VOLTAGE (\$)

REMOTE ALARM CONTACT*
0.6A @ 125VAC
0.6A @ 110VAC
2.0A @ 30VDC

● POWER WIRING
INTERFACE POINTS
○ CONTROL WIRING
INTERFACE POINTS
* ALL CONTROL WIRING
IS DISCRETIONARY
ITEMS MARKED (\$) ARE
EXTRA COST OPTIONS

Utility Systems Technologies, Inc.
PO Box 110, Latham New York 12110

TITLE:
MINI-EVR POWER CONDITIONER
ELECTRICAL SCHEMATIC WITH OPTIONS

REV: 2 DATE: January 22, 2009
REV: 1 DATE: AUGUST 15, 2008
REV: 0 DATE: DECEMBER 03, 2007

SIZE: A	DWG NO.: MEVR-000-000-00	REV: 0
-------------------	------------------------------------	------------------

PROPRIETARY AND CONFIDENTIAL THE INFORMATION CONTAINED IN THIS DRAWING IS THE SOLE PROPERTY OF UTILITY SYSTEMS TECHNOLOGIES, INC.
ANY REPRODUCTION IN PART OR AS A WHOLE WITHOUT THE WRITTEN PERMISSION OF UTILITY SYSTEMS TECHNOLOGIES, INC. IS PROHIBITED

SCALE: NONE SHEET: 1 OF 1